

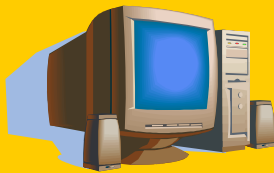


**Three Mile Canyon Landfill
Hours of Operation**

Monday-Saturday 8 am to 4 pm
Closed Sundays, New Years Day,
July 4th, Thanksgiving, Christmas

How to Get There

Take the Wanship Exit off of Interstate 80 onto Route 32. Proceed 3.5 miles. The landfill entrance is opposite the Rockport Reservoir with a big UTELITE sign on the gate. There's also a street sign that says Three Mile Canyon Road.



E-Waste

Accepted daily at **Recycle Utah** in Park City, 1951 Woodbine Way:

- Cell phones, pagers, pdas, ipods
- Computers, CPUs, keyboards, scanners, boom boxes, stereos, any electronics.
- Monitors, laptops, microwaves – Pay \$5 per item for safe disposal of toxins
- Television sets – Pay \$5 < 21” or \$10 > 21” for safe disposal of toxins



HAZMAT & RECYCLING FACILITIES

AT THE

SUMMIT COUNTY LANDFILL

Public Drop-Off Center

Sorted Materials Accepted:

1. lumber
2. metals
3. plastics
4. yard waste
5. corrugated cardboard
6. carpet and carpet padding
7. household trash

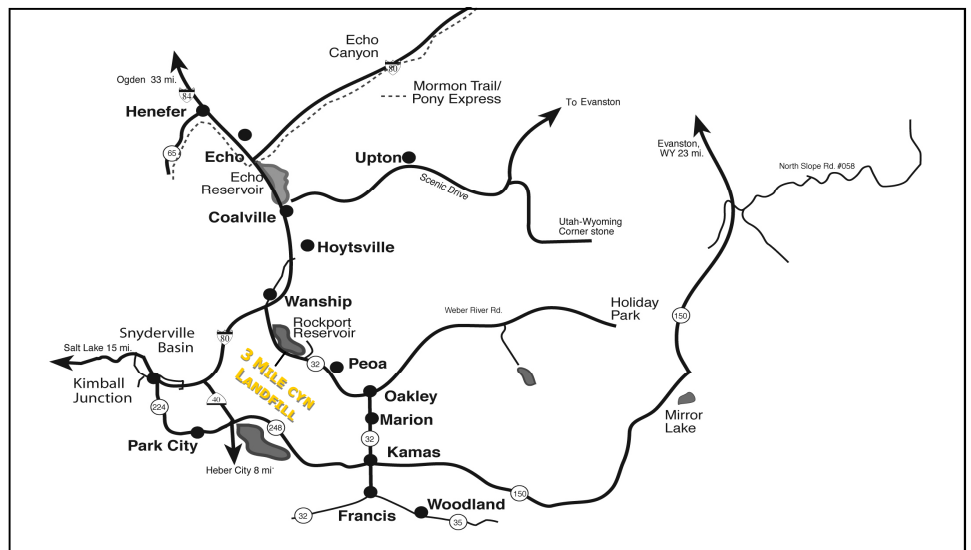


Hazardous Materials Collection Facility

Materials Accepted:

FREE HazMat drop-off for Summit County residents

- Paints, solvents and woodworking supplies including paint and finishes, thinners and strippers, stains
- Automotive products — antifreeze, used oil, brake and transmission fluid, car batteries, tires, gasoline, diesel, and fuel additives, solvents, and degreasers
- Household cleaners with high bleach or abrasive content, including polishes and cleaners, drain openers, oven cleaners
- Fertilizers, pesticides and herbicides
- Rechargeable batteries, fluorescent light bulbs, and neon tubes
- Pool and spa chemicals
- Mercury-containing items including switches, thermostats, smoke detectors and thermometers
- Propane and white gas fuel cylinders
- Film developing chemicals, acids insect repellents



Summit County Department of Public Works (435) 615-3970 or (435) 336-3970
Recycle Utah: (435) 649-9698 www.recycleutah.org